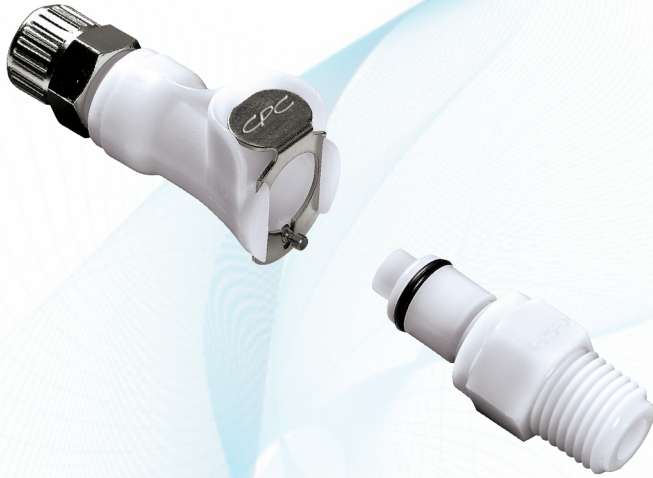


# PLC SERIES CONNECTOR



The **1/4" flow PLC Series** is proven worldwide in thousands of applications and offers the widest selection of sizes and configurations. PLC couplings are injection molded from acetal thermoplastic and are resistant to most mild chemical solutions. One-hand connection/disconnection, plus integral terminations make the PLC Series the choice for ease of use and manufacture.

## FEATURES

CPC thumb latch  
Integral terminations  
Clicks when connected  
Compatible

## BENEFITS

One-hand connection and disconnection  
Fewer leak points, shorter assemblies, faster installations  
Assurance of a reliable connection  
Mates with LC and PLC12 Series couplings

## Specifications ● ● ●

### PRESSURE:

Vacuum to 120 psi, 8.3 bar

### TEMPERATURE:

-40°F to 180°F (-40°C to 82°C)

### MATERIALS:

**Main components and valves:** Acetal  
**Thumb latch:** Stainless steel  
**Valve spring:** 316 stainless steel  
**External springs and pin:** Stainless steel  
**O-rings:** Buna-N

**COLOR:** Natural white, others available

### TUBING SIZES:

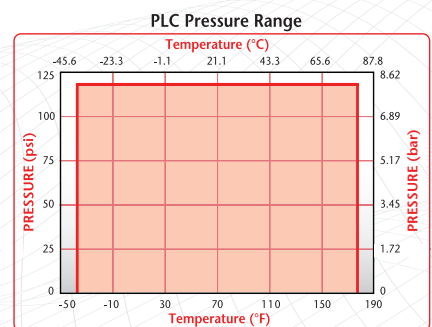
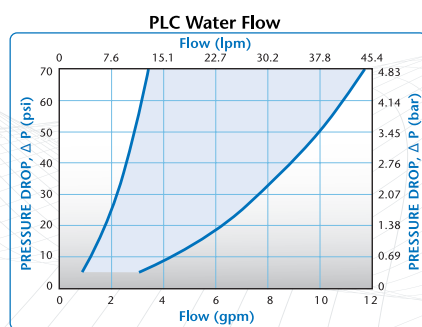
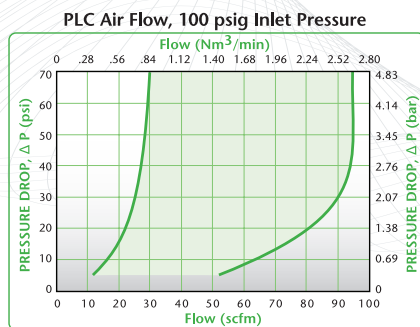
1/4" to 3/8" ID, 6.4mm to 9.5mm ID

#### JG® TUBING SPECIFICATIONS:

**Tube tolerances:** 1/4" OD, +0.001/-0.004 | 3/8" OD, +0.001/-0.004

**Tube Types:** Plastic tube: Polyethylene, nylon, polyurethane.  
For soft or thin wall tubing with JG® terminations, tube supports are recommended.

**Metal tube:** Brass, copper and mild steel



These graphs are intended to give you a general idea of the performance capabilities of each product line. The shaded area of each graph represents the operating range of the product family, i.e., upper and lower values are shown. Therefore, depending on the exact coupling configurations selected, you can reasonably expect values to fall within the shaded area.

## NOTES:

### Liquid Flow Rate Information for Couplings

The chart below shows the flow rate for CPC couplings. Each coupling was tested with water at 70°F (21°C). To determine flow rates for specific coupling configurations use the formula at the right.

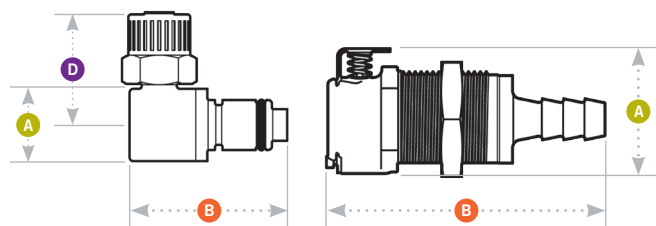
$$Q = C_v \sqrt{\frac{\Delta P}{S}}$$

Q = Flow rate in gallons per minute  
C<sub>v</sub> = Average coefficient across various flow rates (see chart)  
ΔP = Pressure drop across coupling (psi)  
S = Specific gravity of liquid

### C<sub>v</sub> VALUES FOR 1/4" FLOW PLC COUPLINGS

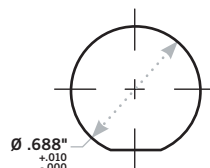
BODIES	INSERTS	PLC 20004	PLCD 20004	PLC 20006	PLCD 20006	PLC 22004	PLCD 22004	PLC 22006	PLCD 22006	PLC 24004	PLCD 24004	PLC 24006	PLCD 24006	PLC 26004
	PLC10004	.40	.36	1.05	.58	.83	.56	1.40	.82	1.40	.75	1.40	.77	.83
	PLCD10004	.36	.31	.73	.48	.66	.41	.82	.50	.80	.45	.77	.45	.81
	PLC10006	.40	.36	1.05	.60	.83	.56	1.40	.81	1.40	.76	1.40	.76	.83
	PLCD10006	.37	.31	.81	.47	.70	.43	1.02	.51	.98	.46	.99	.48	.98
	PLC12006	.38	.36	.84	.63	.74	.56	1.14	.75	1.14	.70	1.14	.72	.74
	PLCD12006	.38	.33	.78	.49	.68	.44	.84	.49	.81	.43	.82	.44	.81
	PLC16004	.38	.37	.87	.54	.95	.51	1.00	.70	.95	.64	1.00	.66	.95
	PLCD16004	.37	.31	.61	.44	.57	.41	.78	.44	.78	.43	.75	.46	.78
	PLC16006	.38	.37	1.00	.57	.95	.53	1.40	.80	1.40	.71	1.40	.73	1.40
	PLCD16006	.38	.32	.71	.49	.63	.42	.89	.51	.96	.45	.92	.49	.97

# PLC DIMENSIONS



## Panel Dimensions

	PANEL OPENING	PANEL THICKNESS MAX.—MIN.	PANEL NUT HEX	PANEL NUT THREAD
COUPLING BODIES	see drawing	.50 — .05	13/16	11/16-24UNEF
COUPLING INSERTS	see drawing	.30 — .05	13/16	11/16-24UNEF



## Coupling Bodies • ACETAL



### TERMINATION IN-LINE PIPE THREAD

### PANEL MOUNT FERRULELESS POLYTUBE FITTING, PTF†

### PANEL MOUNT HOSE BARB

### PANEL MOUNT JG® PUSH-TO- CONNECT

### IN-LINE FERRULELESS POLYTUBE FITTING, PTF†

### IN-LINE HOSE BARB

### IN-LINE JG® PUSH-TO- CONNECT

### TUBING/THREAD SIZE METRIC EQ.

### NSF PN

### STANDARD PN

### A

### B

1/4" NPT		20400	PLC10004 NSF	.90	1.17
1/4" NPT		21000	PLCD10004 NSF	.90	1.17
1/4" BSPT		31600	PLCD10004BSPT NSF	.90	1.15
3/8" NPT		22600	PLC10006 NSF	.90	1.15
3/8" NPT		20600	PLCD10006 NSF	.90	1.15
3/8" OD, .25" ID	9.5mm OD, 6.4mm ID	29700	PLCD12006 NSF	.88	1.95
1/4" ID	6.4mm ID	28000	PLC16004 NSF	.88	1.95
1/4" ID	6.4mm ID	21100	PLCD16004 NSF	.88	1.95
3/8" ID	9.5mm ID	26700	PLCD16006 NSF	.88	1.95
1/4" OD	6.4mm OD	30100	PLC11004 NSF	.88	1.95
1/4" OD	6.4mm OD	28200	PLCD11004 NSF	.88	1.95
1/4" OD, .17" ID	6.4mm OD, 4.3mm ID	23200	PLC13004 NSF	.94	1.82
1/4" OD, .17" ID	6.4mm OD, 4.3mm ID	24300	PLCD13004 NSF	.94	1.82
3/8" OD, .25" ID	9.5mm OD, 6.4mm ID	24500	PLCD13006 NSF	.94	1.95
1/4" ID	6.4mm ID	22500	PLC17004 NSF	.94	1.80
1/4" ID	6.4mm ID	22100	PLCD17004 NSF	.94	1.95
3/8" ID	9.5mm ID	20500	PLC17006 NSF	.94	1.80
3/8" ID	9.5mm ID	20800	PLCD17006 NSF	.94	1.95
1/4" OD	6.4mm OD	23000	PLC14004 NSF	.94	1.95
1/4" OD	6.4mm OD	22900	PLCD14004 NSF	.94	1.95
3/8" OD	9.5mm OD	22300	PLCD14006 NSF	.94	2.09

All measurements are in inches (millimeters) unless otherwise noted. Tubing must meet stated inside and outside diameters.

†NOTE: CPC's Ferruleless Polytube Fitting terminations do not require ferrules to achieve a secure connection, which makes them easier to use and reuse. PTF fittings are designed for semi-rigid tubing, i.e., polyethylene, nylon, polyurethane, etc. NOTE: JG is a registered trademark of John Guest USA, Inc.

## Coupling Inserts • ACETAL



### TERMINATION IN-LINE PIPE THREAD

#### TUBING/THREAD SIZE METRIC EQ.

#### NSF PN

#### STANDARD PN

#### A

#### B

#### D

### PANEL MOUNT FERRULELESS POLYTUBE FITTING, PTF†

1/4" OD, .17" ID 6.4mm OD, 4.3mm ID  
1/4" OD, .17" ID 6.4mm OD, 4.3mm ID  
3/8" OD, .25" ID 9.5mm OD, 6.4mm ID

20400  
21000  
26100  
30400  
22200

PLC24004 NSF  
PLCD24004 NSF  
PLCD24004BSPT  
PLC24006 NSF  
PLCD24006 NSF

.72  
.72  
.72  
.87  
.87

1.25  
1.66  
1.66  
1.25  
1.63

### PANEL MOUNT HOSE BARB

1/4" ID 6.4mm ID  
1/4" ID 6.4mm ID  
3/8" ID 9.5mm ID

22400  
26600  
31200

PLC42004 NSF  
PLCD42004 NSF  
PLC42006 NSF

.94  
.94  
.94

1.91  
2.05  
1.91

### IN-LINE FERRULELESS POLYTUBE FITTING, PTF†

1/4" OD, .17" ID 6.4mm OD, 4.3mm ID  
1/4" OD, .17" ID 6.4mm OD, 4.3mm ID  
3/8" OD, .25" ID 9.5mm OD, 6.4mm ID

23300  
25000  
25200

PLC20004 NSF  
PLCD20004 NSF  
PLCD20006 NSF

.72  
.72  
.72

1.25  
1.88  
1.82

### IN-LINE HOSE BARB

1/4" ID 6.4mm ID  
1/4" ID 6.4mm ID  
3/8" ID 9.5mm ID  
3/8" ID 9.5mm ID

22400  
21500  
20100  
21400

PLC22004 NSF  
PLCD22004 NSF  
PLC22006 NSF  
PLCD22006 NSF

.62  
.62  
.62  
.62

1.35  
1.99  
1.36  
1.81

### IN-LINE JG® PUSH-TO- CONNECT

1/4" OD 6.4mm OD  
3/8" OD 9.5mm OD  
3/8" OD 9.5mm OD

24700  
24800  
24900

PLCD29004 NSF  
PLC29006 NSF  
PLCD29006 NSF

.63  
.78  
.78

1.95  
1.51  
2.11

### ELBOW HOSE BARB

3/8" ID 9.5mm ID

20200

PLC23006 NSF

.67

1.25

.90

All measurements are in inches (millimeters) unless otherwise noted. Tubing must meet stated inside and outside diameters.  
†NOTE: CPC's Ferruleless Polytube Fitting terminations do not require ferrules to achieve a secure connection, which makes them easier to use and reuse. PTF fittings are designed for semi-rigid tubing, i.e., polyethylene, nylon, polyurethane, etc. NOTE: JG is a registered trademark of John Guest USA, Inc.